

Rigid/Intermediate Grade Conduit Fittings

Insulating & Throat Bushings

Rigid Fittings

THROAT BUSHINGS – MALLEABLE IRON

Threaded 105°C Rated Plastic Throat Liner

UL File No. E-19189



Insulated

Cat. #	Size	Unit Qty.	Wt. Lbs. Per 100
1031	1/2"	100	3
1032	3/4"	100	4
1033	1"	50	7
1034	1 1/4"	50	15
1035	1 1/2"	10	19
1036	2"	20	22
1037	2 1/2"	10	44
1038	3"	10	54
1039	3 1/2"	5	72
1040	4"	5	95
1041	5"	1	100
1042	6"	1	127

Threadless 105°C Rated Plastic Throat Liner

UL File No. E-19189



Cat. #	Size	Unit Qty.	Wt. Lbs. Per 100
S1031	1/2"	100	3
S1032	3/4"	100	4
S1033	1"	50	7
S1034	1 1/4"	50	15
S1035	1 1/2"	10	19
S1036	2"	20	22
S1037	2 1/2"	10	44
S1038	3"	10	54
S1039	3 1/2"	5	72
S1040	4"	5	95
S1041	5"	1	100
S1042	6"	1	127

INSULATED THROAT BUSHINGS – MALLEABLE IRON

Features:

- Plastic liner will not chip, crack, swell or shrink; it resists corrosion, chemicals and temperature extremes

Standard Materials:

- Body – malleable iron
- Insuliner – ULTEM1000 rated at 150°C

Standard Finish:

- Body – zinc plated

Threaded 150°C Rated

UL File No. E-19189



Cat. #	Size	Unit Qty.	Wt. Lbs. Per 100
H1031	1/2"	100	6
H1032	3/4"	100	8
H1033	1"	50	11
H1034	1 1/4"	50	14
H1035	1 1/2"	10	17
H1036	2"	20	24
H1037	2 1/2"	10	51
H1038	3"	10	62
H1039	3 1/2"	5	85
H1040	4"	5	104
H1041	5"	1	130
H1042	6"	1	167

INSULATED THROAT BUSHINGS

Threadless 150°C Rated Set Screw Type

UL File No. E-19189



Cat. #	Size	Unit Qty.	Wt. Lbs. Per 100
HS1031	1/2"	100	6
HS1032	3/4"	100	7
HS1033	1"	50	10
HS1034	1 1/4"	50	13
HS1035	1 1/2"	10	15
HS1036	2"	20	21
HS1037	2 1/2"	10	42
HS1038	3"	10	51
HS1039	3 1/2"	5	65
HS1040	4"	5	80
HS1041	5"	1	100
HS1042	6"	1	128

Rigid/Intermediate Grade Conduit Fittings

Insulated Bushings

INSULATED THROAT BUSHINGS – ZINC DIE CAST

Features:

- Threaded

150°C Rated – Zinc Die Cast

UL File No. E-19189



Cat. #	Size	Unit Qty.	Wt. Lbs. Per 100
H1031DC	1/2"	100	2
H1032DC	3/4"	100	3
H1033DC	1"	50	5
H1034DC	1 1/4"	50	7
H1035DC	1 1/2"	20	9
H1036DC	2"	10	11
H1037DC	2 1/2"	10	27
H1038DC	3"	5	33
H1039DC	3 1/2"	5	39
H1040DC	4"	2	46

NON-INSULATED THROAT BUSHINGS – ZINC DIE CAST

Features:

- Used with locknut to terminate threaded rigid conduit or IMC to enclosure
- Threaded



Cat. #	Size	Unit Qty.	Wt. Lbs. Per 100
1031DC	1/2"	100	2
1032DC	3/4"	100	3
1033DC	1"	50	5
1034DC	1 1/4"	50	7
1035DC	1 1/2"	20	9
1036DC	2"	10	10
1037DC	2 1/2"	10	26
1038DC	3"	5	32
1039DC	3 1/2"	5	37
1040DC	4"	2	43

NON-INSULATED THROAT BUSHINGS – MALLEABLE IRON

Features:

- Used with locknut to terminate threaded rigid conduit or IMC to enclosure
- Threaded



Cat. #	Size	Unit Qty.	Wt. Lbs. Per 100
1031NI	1/2"	100	3
1032NI	3/4"	100	4
1033NI	1"	50	7
1034NI	1 1/4"	50	15
1035NI	1 1/2"	10	19
1036NI	2"	20	22
1037NI	2 1/2"	10	44
1038NI	3"	10	54
1039NI	3 1/2"	5	72
1040NI	4"	5	95

INSULATING BUSHINGS

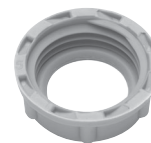
Features:

- Threaded

Standard Material:

- Plastic

UL File No. E-19189



Cat. # Rated 105°C	Cat. # Rated 150°C	Size	Unit Qty.	Wt. Lbs. Per 100
931	H 931	1/2"	50	1
932	H 932	3/4"	50	1
933	H 933	1"	50	2
934	H 934	1 1/4"	50	3
935	H 935	1 1/2"	25	3
936	H 936	2"	25	4
937	H 937	2 1/2"	10	8
938	H 938	3"	10	10
939	H 939	3 1/2"	5	11
940	H 940	4"	5	11
941		5"	5	40
942		6"	5	42